



October 2021

# Student Voting Rates for University of North Carolina at Asheville

2020 NSLVE Campus Report



Jonathan M. Tisch  
College of Civic Life



INSTITUTE FOR DEMOCRACY  
& HIGHER EDUCATION

**October 2021**

**Dear Colleagues:**

We are pleased to send this tailored report containing your students' voting rates for 2020. This report contains three years of relevant topline data: 2016, 2018, and 2020. As always, we disaggregate the data so you can better identify and address gaps in participation.

College and university students participated in record-breaking numbers in the 2020 election. In 2016, the Average Institutional Voting Rate was 53%. This year, it jumped to 66%. We encourage you to review Democracy Counts 2020, our most recent national report.

As in past years, we urge you to share this report widely and strategically, particularly with faculty who, in 2020, were often the most consistent communicators with students about ever-changing voting conditions and deadlines. We also urge you to review our recommendations for engaging elections to cultivate a robust and healthy campus climate for political engagement, discourse, equity, and participation: Election Imperatives (2019) and the more recent Election Imperatives: A Time of Physical Distancing and Social Action. Since "pervasive political discussions" and attentiveness to the campus culture around speech and academic freedom are among our top recommendations, we direct you to our discussion guides on talking about your NSLVE report, on free speech and inclusion, and on hot topics, our Making Sense of ... guides.

Finally, we always encourage you to work with us. Help us help you get better data by reaching out. Email [IDHE@Tufts.edu](mailto:IDHE@Tufts.edu) for more information. And as always, watch your inbox for our periodic newsletter, IDHE Update, for announcements about upcoming releases and new resources.

Congratulations on engaging your students in the 2020 election. Remember, student political learning is a year-round objective. Elections may be episodic, but student political engagement should not be.

All the Best,  
IDHE Team

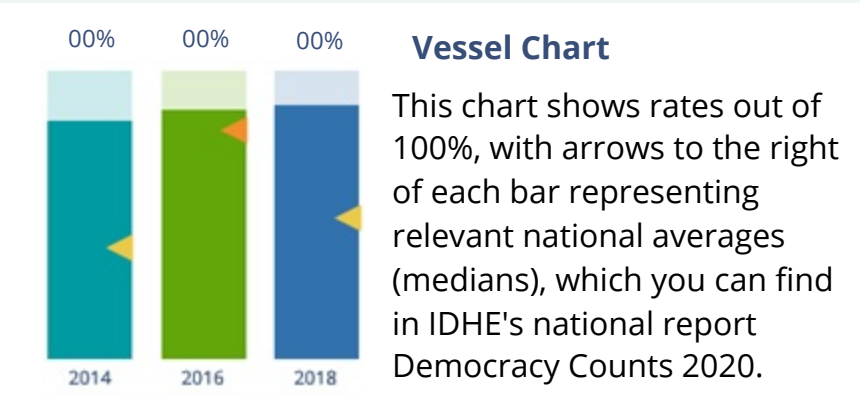


**(Top Row from left) Duy Trinh, Program Administrator; Adam Gismondi, Director of Impact; Dave Brinker, Senior Researcher;**  
**(Bottom Row from left) Nancy Thomas, Director; Norma López, Postdoctoral Scholar; Prabhat Gautam, Data Manager.**

We also want to acknowledge and thank **Syed Golam Mohaimen, M.S. student in Data Science at Tufts University** for his contributions toward the creation of these reports.

# In This Report

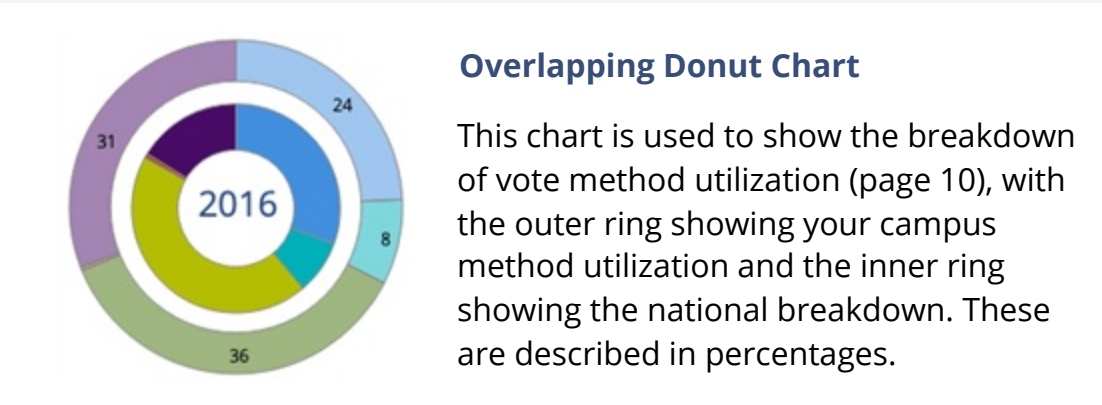
This report presents data on student voter participation rates for your campus. The topline counts on page 5 tells you how many students voted, but we encourage you to look carefully at the data on subsequent pages to learn who voted. Data are presented in the form of vessel charts, overlapping donut charts, and tables.



	2014			2018			2014-2018 Change (p.p.)
	Enrolled	Voted	Rate (%)	Enrolled	Voted	Rate (%)	
Asian	-	-	-	-	-	-	-
American Indian/ Alaska Native	-	-	-	-	-	-	-
Black	-	-	-	-	-	-	-
Hispanic	-	-	-	-	-	-	-

## Tables

The tables show, on the left-side columns, the numbers of students and the rates from 2016, 2018, and 2020. On the left-side, percentage point (p.p.) changes between 2016 and 2020. A red down arrow indicates a decrease, a green up arrow indicates an increase, and a yellow arrow pointing to the right indicates no change. "-" in these tables indicates that the data is unavailable/missing, or is available for 10 or less students.



# Voting, Registration and Yield Rates

YOUR INSTITUTION

81.2%

2020 Voting Rate

+18.1

Change From 2016

ALL INSTITUTIONS

66%

2020 Voting Rate

REGISTRATION RATE

84.9%	87.6%	93.7%
2016	2018	2020

The **Registration Rate** is the percent of your voting-eligible students who registered to vote.

VOTING RATE OF REGISTERED STUDENTS

74.3%	58.0%	86.7%
2016	2018	2020

The **Voting Rate of Registered Students** is the percent of registered students who voted on Election Day. We often refer to this as the “yield” rate.

VOTING RATE

63.1%	50.8%	81.2%
2016	2018	2020

The **Voting Rate** is the percentage of eligible students who voted on Election Day. The voting rate is also the product of the registration and yield rates.

# Looking Closer

## Voting and Registration Rates

	2016	2018	2020	2016-2020 Change (p.p.)
Total Student Enrollment	3,751	3,643	3,292	↓ -459
(Age under 18/Unknown)	-	-	-	-
(IPEDS estimated non-resident aliens)	47	46	26	↓ -21
(FERPA records blocked)	13	20	-	-
(Non-Degree Seeking Students)	-	-	-	-
Total eligible voters	3,691	3,577	3,258	↓ -433
Number of students who registered	3,132	3,132	3,051	↓ -81
Number of students who voted	2,328	1,817	2,644	↑ 316
Registration Rate %	85	88	94	↑ 9
Voting Rate of Registered Students %	74	58	87	↑ 12
Voting Rate %	63	51	81	↑ 18

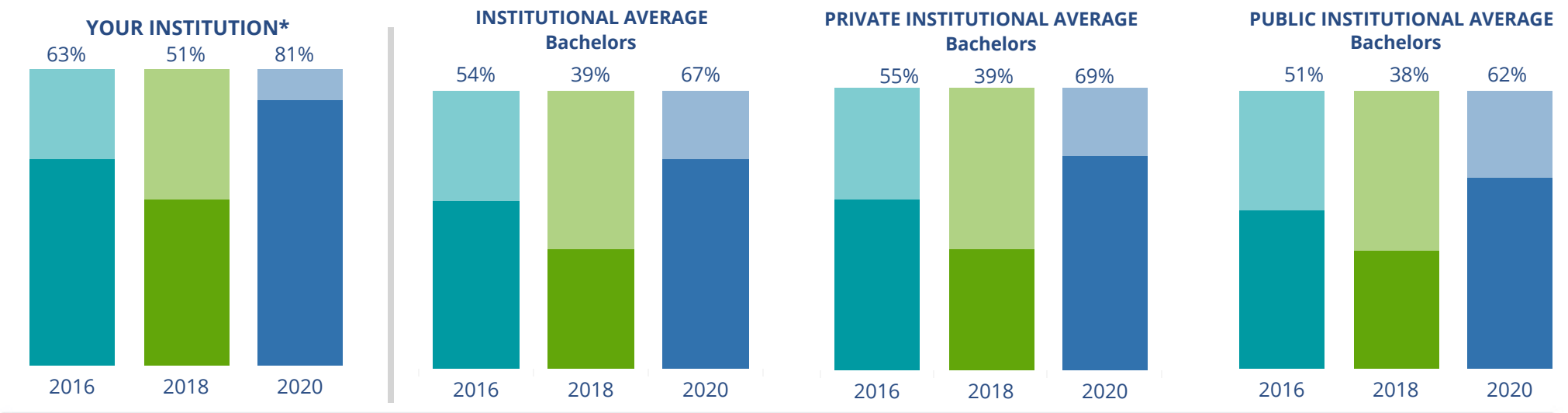
**This page provides the numbers we used to calculate your voting, registration, and yield rates.** The sub-categories under total student enrollment are the adjustments that we make to account for students who are ineligible to vote due to age or citizenship status. We also exclude, when correctly flagged, students who are not pursuing degrees.

We use IPEDS-derived estimates of NRAs when institutions do not submit non-resident alien status data to NSC, or we cannot verify the accuracy of the reported counts. This estimate is given by "IPEDS estimated non-resident aliens" on this page. If you believe the number of international students reported on this report is incorrect, you can manually adjust your institution's voting rates by using our recalculation tool. <https://id-he.tufts.edu/nslve/nslve-recalculation-tool>.

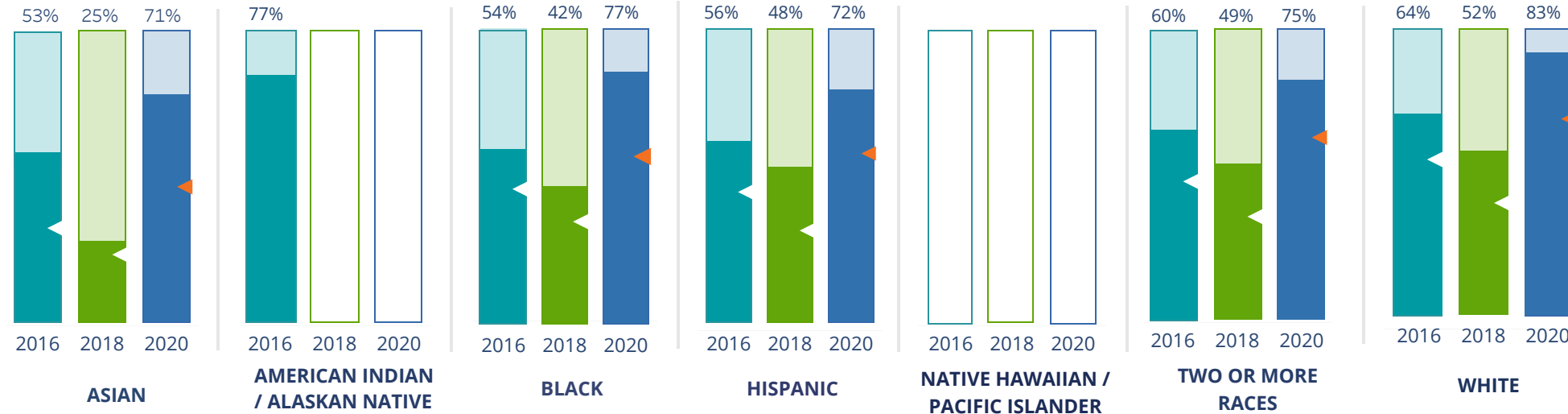
# By Institution Types



These are estimated voting rates of your institution compared to the average voting rates of similar institutions in NSLVE. \*"Your Institution" chart is presented at a different scale.



## By Race / Ethnicity



**These are estimated voting rates for race / ethnicity groups.** These classifications are provided by campuses and are obtained following race reporting procedures\* defined by the National Center for Education Statistics of the Institute of Education Sciences (IES). Please see our FAQ for more detail on why we cannot report national benchmark for some of the demographic groups:

<https://tufts.app.box.com/v/idhe-nslve-report-faq>

If you notice unavailable/missing data in this page, it could mean any of the following for your institution: (i) does not report this data; (ii) did not provide this data in past years; (iii) does not separately submit data for one or more of the demographic groups, or (iv) the data is reported for 10 or fewer students.

\* <https://nces.ed.gov/ipeds/report-your-data/race-ethnicity-collecting-data-for-reporting-purposes>



# Looking Closer

## By Race/Ethnicity

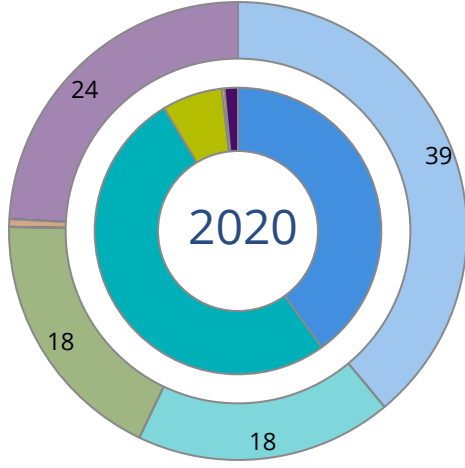
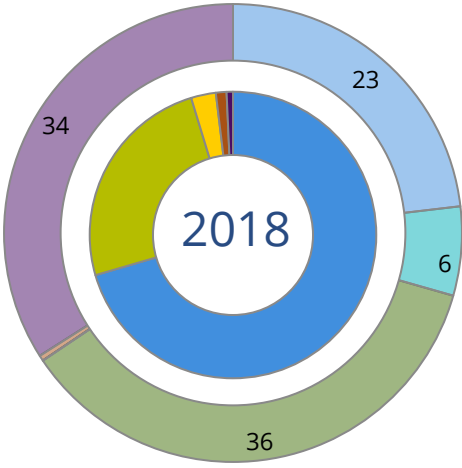
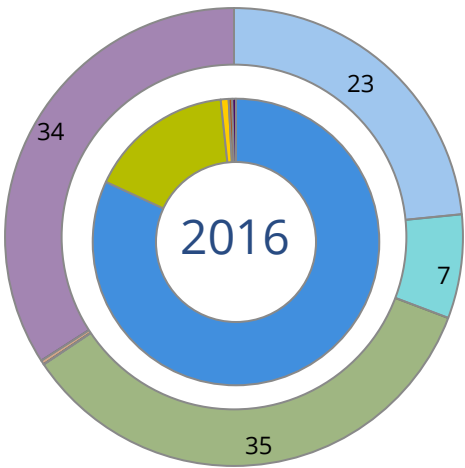
This page provides the numbers we used to calculate race / ethnicity group voting rates. We include the counts of students and the change in rates between the two most recent comparable election years. If you notice unavailable/missing data in this page, it could mean any of the following for your institution: (i) does not report this data; (ii) did not provide this data in past years; (iii) does not separately submit data for one or more of the demographic groups, or (iv) the data is reported for 10 or fewer students.

	2016			2018			2020			2016-2020 Change (p.p)
	Enrolled	Voted	Rate	Enrolled	Voted	Rate	Enrolled	Voted	Rate	
Asian	72	38	53	71	18	25	61	43	70	↑ 18
American Indian/ Alaska Native	17	13	76	27	-	-	-	-	-	-
Black	158	85	54	191	81	42	179	138	77	↑ 23
Hispanic	221	123	56	290	139	48	278	200	72	↑ 16
Native Hawaiian/ Pacific Islander	-	-	-	-	-	-	-	-	-	-
2 or More Races	181	108	60	163	80	49	158	119	75	↑ 16
White	2,963	1,887	64	2,769	1,434	52	2,406	1,992	83	↑ 19
Race Unknown	126	74	59	112	56	50	193	146	76	↑ 17



# By Voting Method

Not-In-Person Early Vote In-Person Other Provisional Unknown



	2016		2018		2020		2016-2020	
	Voted	Rate	Voted	Rate	Voted	Rate	Change (p.p.)	
Early Vote	–	–	–	–	1,357	51	–	
In-Person on Election Day	381	16	451	25	179	7	-10	↓
Not-In-Person	1,906	82	1,281	71	1,060	40	-42	↓
Other	20	1	51	3	–	–	–	
Provisional	–	–	22	1	–	–	–	
Voting Method Unknown	12	0	12	1	39	2	1	↑

These are estimated rates for vote method utilization, the number of students utilizing each method, and the percent of students utilizing each method. Not all U.S. states provide information on vote method; voting method for voter files from these states are classified “Voting Method Unknown.” For a list of these states, see our FAQ. <https://idhe.tufts.edu/nsive/nsive-faq#CampusReports>

## By Age Group

	2016	2018	2020
18-21	59%	46%	82%
22-24	61%	49%	75%
25-29	63%	57%	74%
30-39	72%	68%	83%
40-49	81%	68%	81%
50+	97%	88%	92%

**Voting is habit-forming and young voters will usually continue as voters in subsequent elections.** Also, young voters are more likely to be contacted by campaigns and are visible, and therefore significant, to elected officials. While in the past, we have seen voting rates increase across age groups, in recent cycles, the most significant increases have been among first-time and the youngest voters. Some colleges serve primarily young students, traditionally viewed as students in the 18-21 or 22-24 categories here. Others have much higher numbers of enrolled older undergraduate or graduate students.

# Looking Closer

## By Age Group

Here, we provide the numbers of students in each age category and the voting rates for each group. These are based on the student’s age on the day of the election, as calculated by the National Student Clearinghouse using data from student enrollment records.

	2016			2018			2020			2016-2020	
	Enrolled	Voted	Rate	Enrolled	Voted	Rate	Enrolled	Voted	Rate	Change (p.p)	
18-21	2,289	1,346	59	2,333	1,077	46	2,101	1,731	82	↑	24
22-24	632	388	61	644	316	49	582	434	75	↑	13
25-29	361	226	63	290	166	57	278	205	74	↑	11
30-39	232	167	72	197	134	68	193	161	83	↑	11
40-49	100	81	81	77	52	68	58	47	81	↑	0
50+	124	120	97	82	72	88	72	66	92	↓	-5

# Looking Closer

## By Sex

	2016			2018			2020			2016-2020	
	Enrolled	Voted	Rate	Enrolled	Voted	Rate	Enrolled	Voted	Rate	Change (p.p)	
Female	2,163	1,407	65	2,075	1,096	53	1,862	1,541	83	↑	18
Male	1,574	920	58	1,547	720	47	1,406	1,091	78	↑	19

**These are estimated voting rates for sex groups and the numbers we used to calculate their voting rates.** These classifications are provided by campuses and are obtained following the reporting procedures defined by the National Center for Education Statistics (NCES) of the Institute of Education Sciences (IES). Presently, NCES requires institutions to report students as “Male” or “Female” only.\*

If you notice missing data in this page, it could mean any of the following for your institution: (i) does not report this data; (ii) did not provide this data in past years; (iii) does not separately submit data for one or more of the demographic groups, or (iv) the data is reported for 10 or fewer students.

\*<https://surveys.nces.ed.gov/ipeds/public/survey-materials/faq?faqid=11>

# Looking Closer

## By Education Level / Undergraduate Class Year

	2016			2018			2020			2016-2020	
	Enrolled	Voted	Rate (%)	Enrolled	Voted	Rate (%)	Enrolled	Voted	Rate (%)	Change (p.p)	
EDUCATION LEVEL											
Undergraduate	3,716	2,312	62	3,601	1,800	50	3,278	2,638	80	↑	18
Graduate	21	16	76	19	15	79	-	-	-	-	-
Class Unknown	-	-	-	-	-	-	-	-	-	-	-
CLASS YEAR											
First Year	-	-	-	-	-	-	-	-	-	-	-
Second Year	-	-	-	-	-	-	-	-	-	-	-
Upper Level	-	-	-	-	-	-	-	-	-	-	-
ENROLLMENT STATUS											
Full-time	3,162	1,907	60	3,128	1,492	48	2,803	2,265	81	↑	20
Part-time	576	421	73	495	325	66	481	379	79	↑	6

These are estimated voting rates by Education Level (undergraduate/graduate), Class Year, and Enrollment Status (full-time/part-time), and the numbers we used to calculate these rates.

If you notice missing data in this page, it could mean any of the following for your institution: (i) does not report this data; (ii) did not provide this data in past years; (iii) does not separately submit data for one or more of the demographic groups, or (iv) the data is reported for 10 or fewer students.

## By Field of Study

FIELDS	2016			2018			2020			2016-2020
	Enrolled	Voted	Rate	Enrolled	Voted	Rate	Enrolled	Voted	Rate	Change (p.p)
Area, Ethnic, Cultural, and Gender Studies	11	–	–	15	–	–	11	–	–	–
Biological and Biomedical Sciences	153	104	68	151	88	58	132	107	81	↑ 13
Business, Management, and Marketing	201	115	57	201	82	41	177	129	73	↑ 16
Communication and Journalism	107	67	63	108	55	51	135	115	85	↑ 23
Computer and Information Sciences	92	51	55	115	55	48	128	106	83	↑ 27
Engineering and Engineering Technologies	98	51	52	120	54	45	96	61	64	↑ 12
English Language and Literature	114	73	64	106	55	52	120	97	81	↑ 17

**These are estimated voting rates by field of study, and the numbers we used to calculate the field of study rates.** For an explanation of CIP codes, please see our FAQ.\* There are roughly 8,000 fields of study among U.S. colleges and universities, so we provide rates for condensed categories.

\*<https://tufts.app.box.com/v/idhe-nslve-report-faq>

## By Field of Study

FIELDS	2016			2018			2020			2016-2020 Change (p.p)
	Enrolled	Voted	Rate	Enrolled	Voted	Rate	Enrolled	Voted	Rate	
Foreign Languages, Literatures, and Lingui..	59	36	61	49	28	57	40	37	93	↑ 31
Health Professions	140	88	63	125	49	39	124	95	77	↑ 14
History	61	40	66	68	41	60	54	49	91	↑ 25
Liberal Arts and Sciences, and Humanities	1,683	1,050	62	1,454	642	44	1,161	924	80	↑ 17
Mathematics and Statistics	63	42	67	57	32	56	43	38	88	↑ 22
Natural Resources and Conservation	158	99	63	189	112	59	169	143	85	↑ 22
Philosophy and Religious Studies	24	14	58	22	13	59	25	21	84	↑ 26
Physical Sciences	129	90	70	109	63	58	140	109	78	↑ 8
Psychology	148	94	64	193	114	59	196	159	81	↑ 18
Social Sciences	202	126	62	226	131	58	221	187	85	↑ 22
Visual and Performing Arts	295	178	60	312	192	62	308	254	82	↑ 22
Unknown	–	–	–	–	–	–	–	–	–	–



# About This Report

## Thank you for participating in the National Study of Learning, Voting, and Engagement.

Since NSLVE's launch in 2013, nearly 1,200 colleges and universities have signed up to receive their voting rates for the 2012, 2014, 2016, 2018, and 2020 federal elections.

Along with others, your institution's participation in this study has allowed us to build a robust database of over 50 million college student records, about 10 million for each election year, that serve as a foundation for innovative research on college student political learning and engagement in democracy.

NSLVE is a signature initiative of the Institute for Democracy and Higher Education (IDHE) at Tufts University's Jonathan M. Tisch College of Civic Life. The mission of IDHE is to shift college and university priorities and culture to advance political learning, agency, and equity. We achieve our mission through research, resource development, technical assistance, and advocacy.

### About the Data

The voter registration and voting rates in this report reflect the percentage of your institution's students who were eligible to vote and who actually voted in the 2016, 2018, and 2020 elections.

These results are based on enrollment records your institution submitted to the National Student Clearinghouse (NSC) and publicly available voting files collected by L2 Political.

Enrollment lists are adjusted by deducting students under age 18 (at the time of the election), people identified as non-degree seeking and those identified by campuses as "nonresident aliens" (NRAs) (the federal government's category for mostly international students). Unfortunately, not all campuses report NRAs to NSC. For those campuses, we use IPEDS to calculate the number of NRA students on each campus and adjust NSC enrollment numbers to estimate the number of students to remove. We also quality check NRA removals by verifying that there is little to no discrepancy between the number of international students reported by the campus to IPEDS and to NSC. We cannot adjust subgroup analyses absent identification of NRAs verified by the process above. We welcome closer partnerships with individual colleges and universities to provide more accurate rates. For more on the data and the matching process, see our FAQ on Campus Reports.

University of North Carolina at Asheville

Thank you for the work you do to improve your students' political learning and engagement. We hope that you find your NSLVE report useful. For up-to-date news on NSLVE data, resources, and to sign up for our newsletter visit: <https://idhe.tufts.edu>.

References: IDHE encourages report recipients to share this report as broadly as possible, including posting it on the college or university's website. When doing so, please use the following citation: Institute for Democracy & Higher Education: National Study of Learning, Voting and Engagement. (2021). 2016, 2018, and 2020 report for \_\_\_\_\_ [name of institution]. Medford, MA.



Barnum Hall  
163 Packard Ave.  
Medford, MA 02155

tischcollege@tufts.edu  
617.627.3453



Institute for Democracy & Higher Education:  
National Study of Learning, Voting, and Engagement  
Barnum Hall, Medford, MA 02155

Follow Us on Twitter: @TuftsIDHE  
NSLVE@tufts.edu  
617.627.0620